



"SEA SIDE OASIS"

3,359 HEATED SQUARE FEET : 3+ BEDROOM : 3.5 BATH

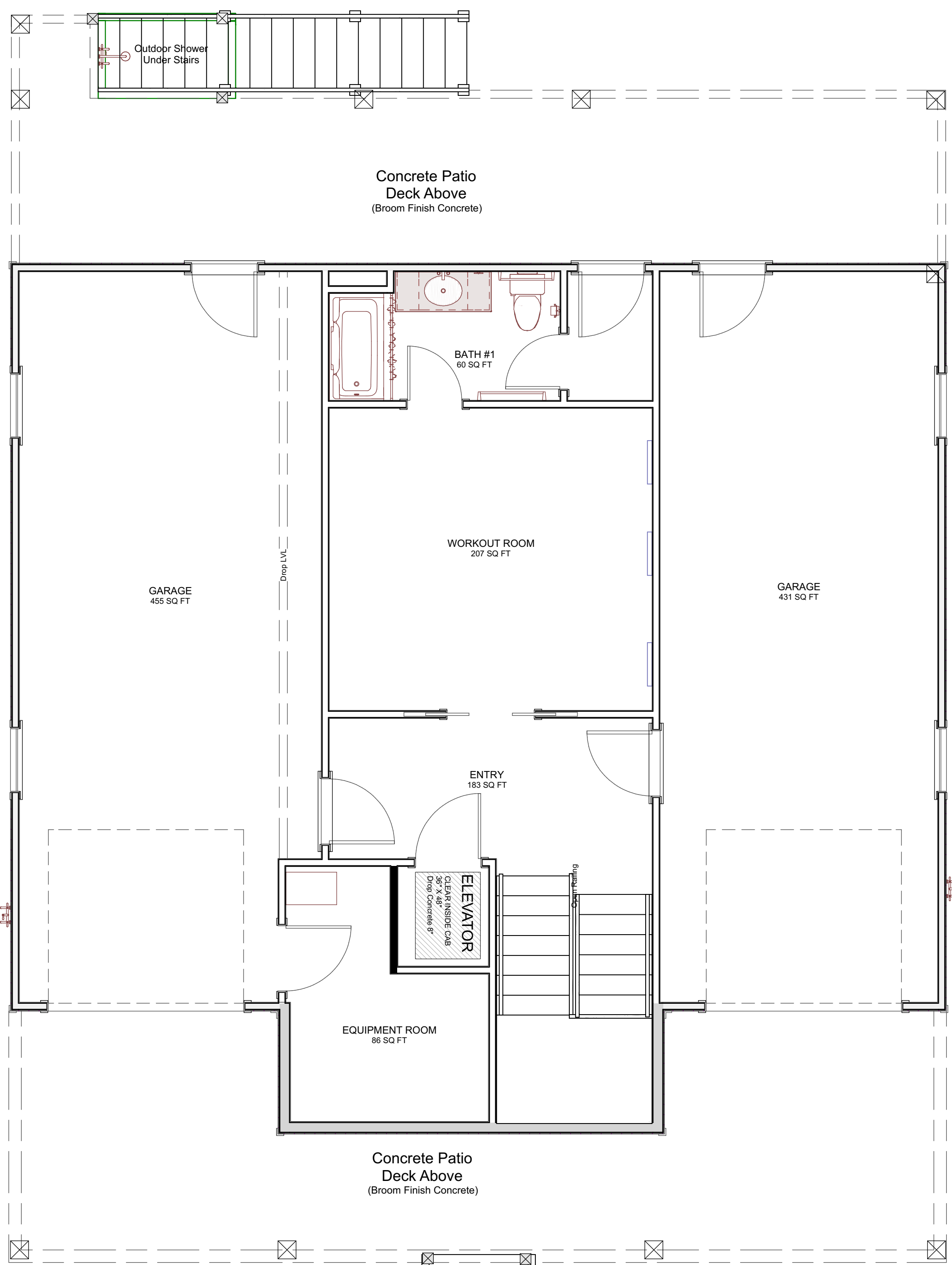


"SEA SIDE OASIS"

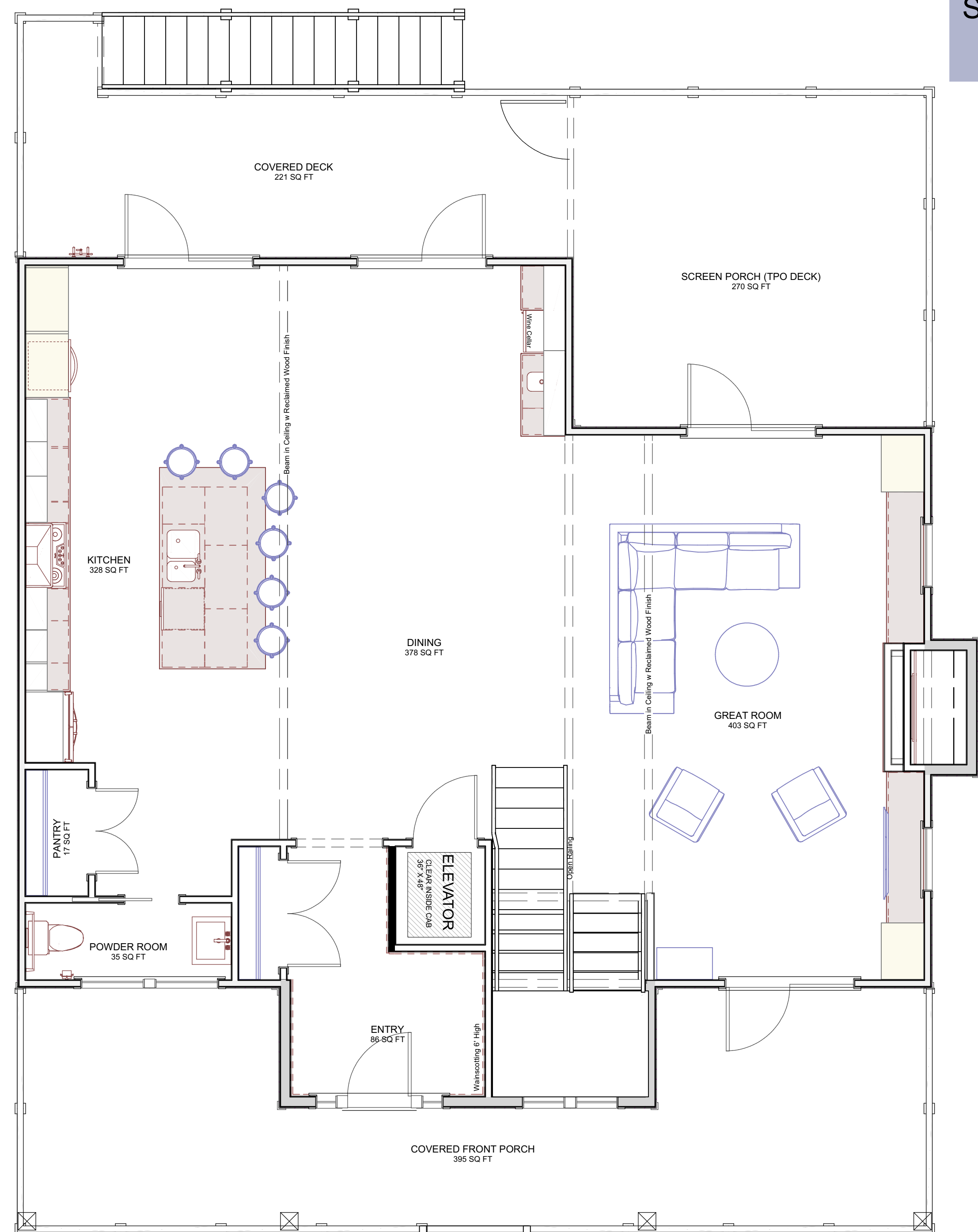
PLANS ARE GENERAL LAYOUTS AND SUBJECT TO FUTURE REVISIONS DUE TO LOCATION, BUDGET AND REQUIREMENTS

3,359 SQUARE FEET

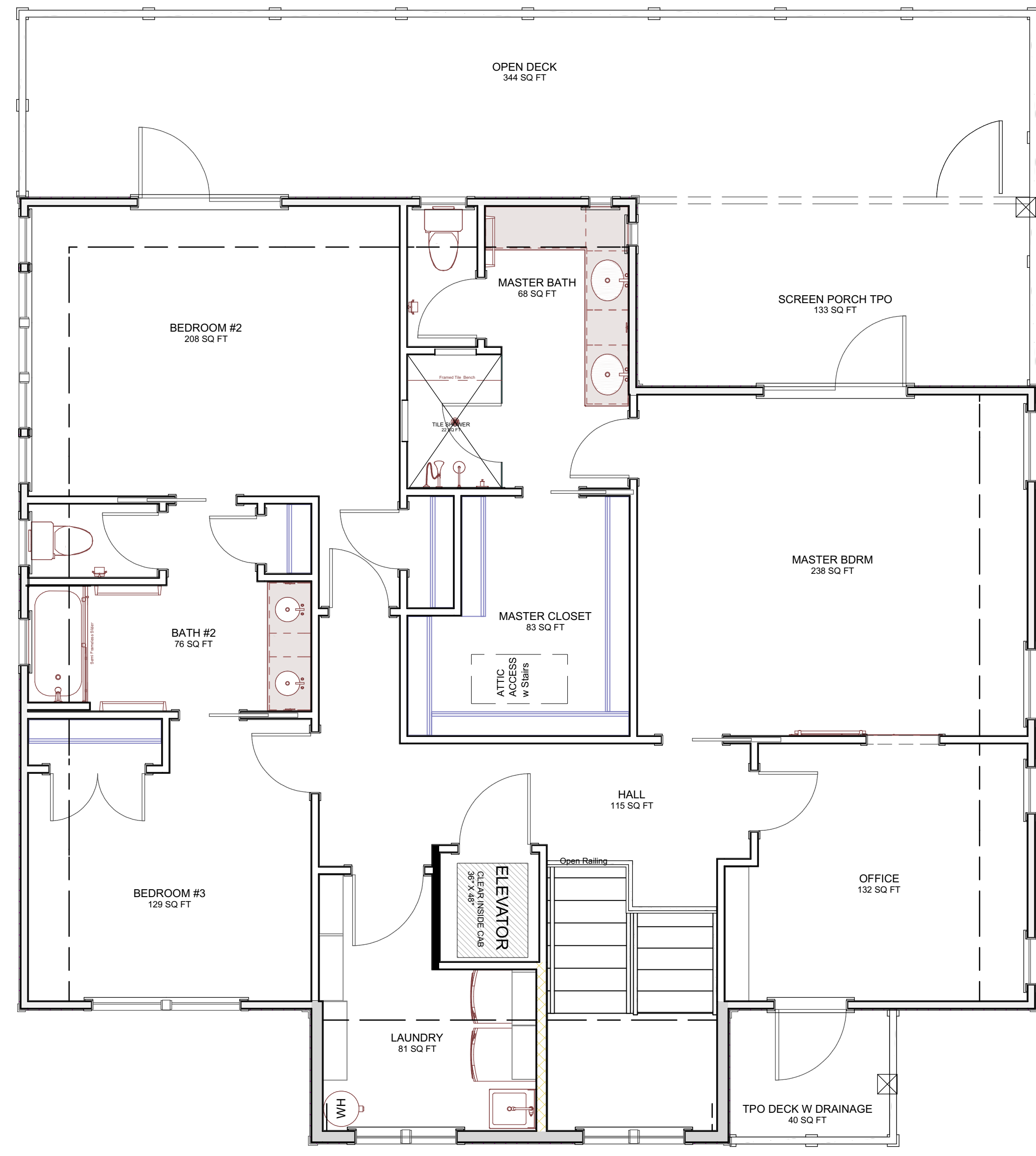
GROUND FLOOR HEATED: 549 SQ FT 8' CEILING HEIGHT 4" WALLS
 FIRST FLOOR HEATED: 1,441 SQ FT 9' CEILING HEIGHT 4" WALLS
 SECOND FLOOR HEATED: 1,369 SQ FT 8' CEILING HEIGHT 4" WALLS
 DECKS: 1,400 SQ FT COVERED/SCREENED
 GARAGES UNHEATED: 886 SQ FT
 STORAGE HEATED: 86 SQ FT



GROUND FLOOR



FIRST FLOOR



SECOND FLOOR